

HealthLinX Limited

ASX Announcement

OvPlex™ sales launch in Australia today

29th October 2008, Melbourne: Australian diagnostics developer HealthLinX Limited (ASX: HTX) with ARL Pathology is today launching OvPlex™ as the world's first early stage diagnostic test for ovarian cancer.

"This is a medical milestone in women's health. It changes HealthLinX into a diagnostic developer and product sales company," says Mr Nick Gatsios, Managing Director of HealthLinX.

"Most importantly, we believe this test could lead to many hundreds of lives being saved in Australia."

The test will be available through general practitioners in Melbourne before being rolled out to other states. It will cost \$200 per test.

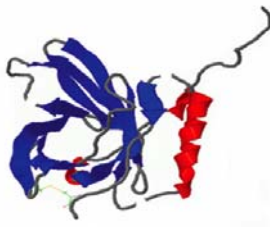
1500 Australian women are diagnosed with ovarian cancer each year and more than 800 of those women will die from the disease. Worldwide 230,000 new cases are diagnosed annually with more than 142,000 disease fatalities.

Chairman of HealthLinX, Professor Greg Rice said: "The reason ovarian cancer is the most lethal of the reproductive tract cancers is that 75 per cent of women with ovarian cancer are not diagnosed until late stage disease. Their chances of surviving five years are probably only 20-30 per cent. If the disease is diagnosed at early stage, when it is contained within the ovaries, the chance of surviving five years rises to 80 per cent."

"That is why it is so important to try and develop better tests for diagnosing ovarian cancer, particularly early stage disease. That is where we can make a difference and save lives."

HealthLinX is continuing research and development on the next generation ovarian cancer diagnostic to improve accuracy sufficiently to develop the world's first community-based screening test.

For information about how to purchase the test, please visit the OvPlex™ website: www.ovplex.com.au



HealthLinx Limited

Enquiries

Nick Gatsios, HealthLinx Limited	03 9208 4200
Rudi Michelson (Monsoon Communications)	03 9620 3333

About HealthLinx Limited (ASX:HTX)

HealthLinx uses biomarkers to develop best practice diagnostics that detect and monitor diseases. First commercial targets are:

- Ovarian cancer diagnostic (OvPlex) targeting US\$270m pa market
- Prostate Cancer targeting US\$350m pa market

A biomarker is a specific biochemical in the body that measures disease or the effects of treatment.

HealthLinx targets important markets with unmet needs and is developing next generation high accuracy diagnostics and will seek to out-license to global partners for worldwide sales.

www.healthlinx.com.au